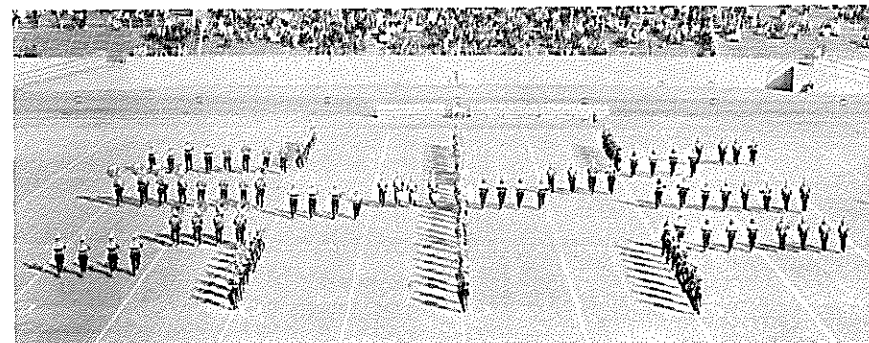




STAGE BAND MEMBERS: Back row: Steve Mills, Ernest Tate, Chester Nolan, Judd Graves, Leo Brooks, Randy Huff, Carroll Fulton, Sherry Frankfather, Elaine Miracle, Tommy Shillingburg, Kenneth Fulton, Vicki Evans, Ronnie Lipham, Dub Cameron and Pudgie Ledbetter. Front row: Julie Anderson, Susie Jackson, Martha Spinks, Betsy Burnett, Pam Peden, Vicki Ray, Deva Wood, Philip Spalding, Gibby Dean, Marc King and Mike Fannin.



The "K" Band received a Division I at Contest in Odessa.

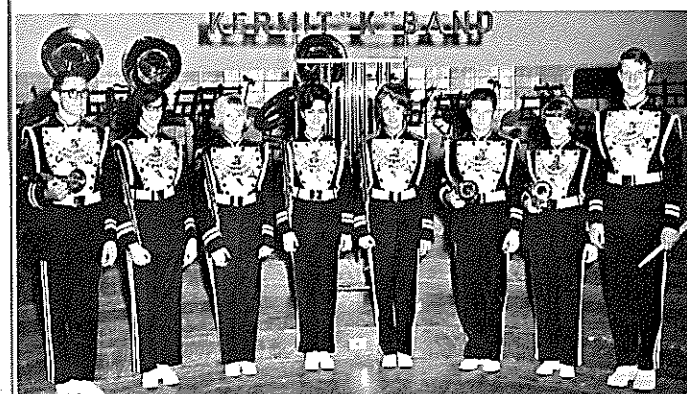


The "K" Band and Stage Band presented the annual Spring Concert on May 7.

In the fall the "K" Band received a Division I in Marching Contest and in the spring they got a Division I in Sightreading and a Division II in Concert at the UIL Contest.

Mr. G. T. Gilligan, Director

Members elected to the All-Region Band were Tommy Shillingburg, Georgia Ehlers, Linda Sparks, Janis Coulter, Jane Germuiller, Kenneth Fulton, Elaine Miracle and Dana Kirk.



"K" Band Officers: Sharon Jones, Randy Huff, Pam Duncan, Ronnie Lipham and Connie McDonald.



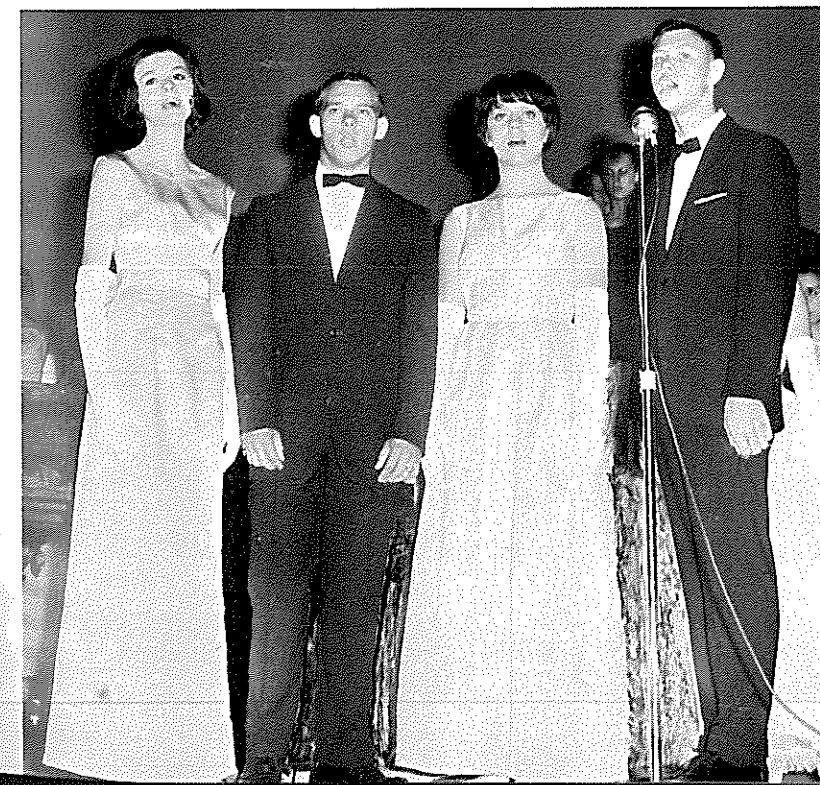
The Triettes, Jenita Hemphill, Sharron Mulsow and Meredith Lancaster, perform at the Open House Concert.

Choral Groups Perform at Activities

The Choral groups are organized outside of the regular classes and take outside preparation. They are made up of volunteers and perform at various activities.

Eddie Everett was selected for the All-State Choir. Tyleen Deeds, Judy Petree and Jenita Hemphill were selected for the All-Regional Choir.

Mr. Jonathan Lancaster, choir director, directs the Choraliers.



Judy Petree, Randy Bryan, Tyleen Deeds and Eddie Everett sing in a quartet for the Open House Concert.